

## SEMI-Rigid Aluminum Ducting

The product is constructed of a special fabrication produces a continuous lock seam that permits the duct to be pulled open, compressed, bent and re-bent without developing leakage.



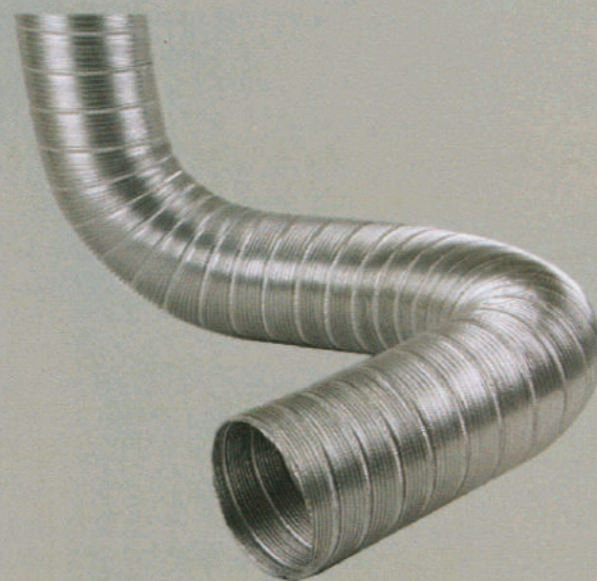
### Advantage :

- Do not delaminate or dry rot when heat aged
- Easy installation due to Light Weight
- Can be bent into any configuration
- Can be compressed to nearly 3.5 times its original length for convenient shipping and handling
- Will not sag between 18M supports
- Has near zero permeability and leakage; reduces energy loss
- Multiple use products

Moradon Semi-rigid aluminium duct can be used in a number of applications including:  
Exhaust ventilation, Heating, Air Conditioning, Fresh air intake

### PERFORMANCE DATA

|                   |                                      |
|-------------------|--------------------------------------|
| Diameter          | 100mm - 500mm                        |
| Material          | Aluminium Foil                       |
| Flame Spread      | 0                                    |
| Smoke Developed   | 0                                    |
| Temperature Range | -50°C -225°C                         |
| Bending Radius    | 1.5X Diameter                        |
| Maximum Velocity  | 5000 F.P.M                           |
| Static Pressure   | Positive 3000 pa<br>Negative 3000 pa |
| 100mm to 250mm    |                                      |
| 300mm to 500mm    | Positive 2000 pa<br>Negative 2000 pa |



MORADON

# CATALOGUE DUCTING



MORADON

[www.moradonduct.com](http://www.moradonduct.com)

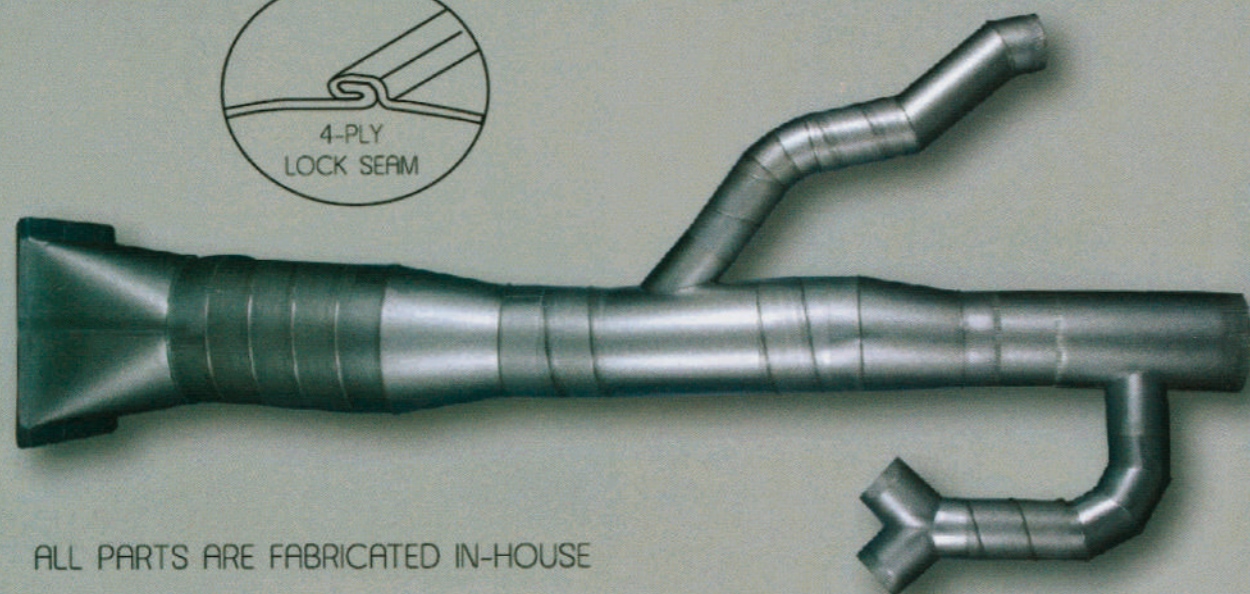
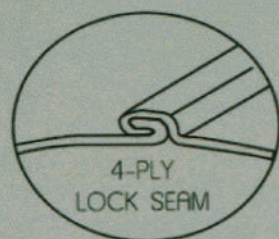
## SPIRAL DUCT

This Product is formed from a coil of metal into a rigid steel tube with 4-ply spiral lockseam. It has a smooth interior for low friction loss with the grooved seam entirely on the outside. This pipe has a resistance to crushing approximately 2 1/2 times of that longitudinal lockseam or welded pipe. Optional corrugations are available which increase the rigidity of the pipe by approximately 300%. Pipe selection can be joined together by a complete seal spiral pipe connector.



### Advantage :

- High performance duct
- Very low air friction
- Easy installation due to rigid features
- Artistic design
- High Strength to weight ratio
- Long lasting
- No major maintenance required



ALL PARTS ARE FABRICATED IN-HOUSE

## FLEXIBLE ALUMINIUM DUCTING

Moradon Flexible Aluminum ducting is made of a heavy duty aluminium foil laminate bonded with a high quality adhesive and reinforced with a high carbon corrosion proof spring wire. Designed with only 1" spacing (approximately 25mm) between the wires. The Duct is fully flexible, compressible and extendable air duct. forming an air tight, easy to use, quality air duct. In addition due to its flexible nature, the need for elbows is eliminated, allowing for ease of installation difficult to reach area. It cuts easily with knife and snips.

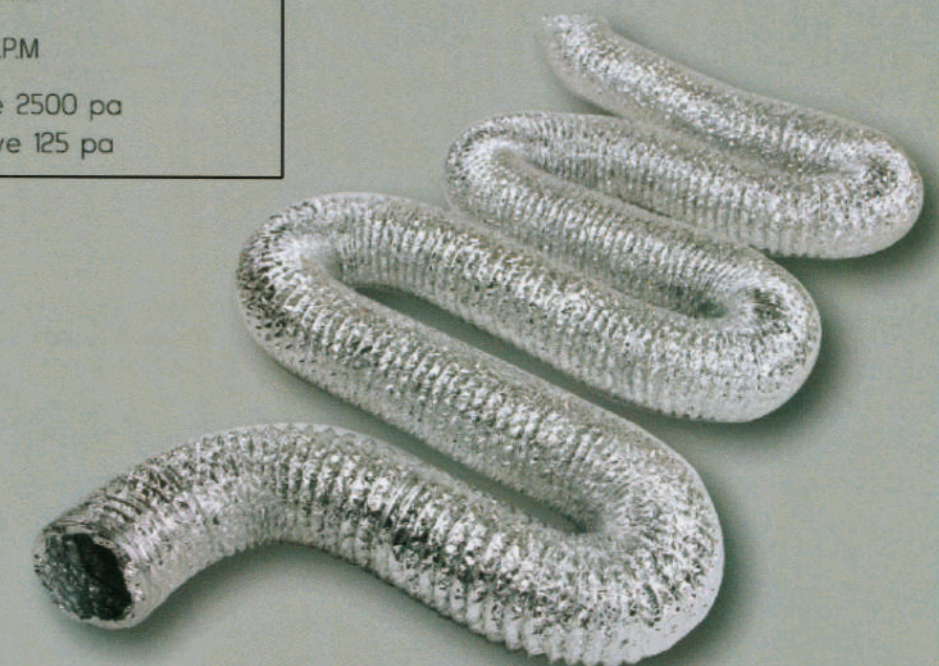
Moradon Flexible Aluminum duct comes in two series, Flexible Single (FS-Series) which are made up of one layer of PET aluminum laminate whereas Flexible Double (FD-Series) which is made up of 2 ply multi layered PET aluminum laminate makes it more durable. This ducting system is more popular compared with other flexible ducting system especially in cost and Flexible.

### PERFORMANCE DATA

|                   |  |
|-------------------|--|
| Diameter          | 100mm - 300mm (4" to 12")                              |
| Material          | Available in PET aluminium & PVC film (Green / Orange) |
| Flame Spread      | Less than 25   |
| Smoke Developed   | Less than 50   |
| Temperature Range | -5°C -120°C  |
| Bending Radius    | 1X Diameter  |
| Maximum Velocity  | 5500 F.P.M   |
| Static Pressure   | Positive 2500 pa<br>Negative 125 pa                    |

### ADVANTAGE :

1. Easy instalation due to light weight
2. Can be bent into any configuration
3. Can be compressed to for convenient shipping and handling
4. Multiple use products





COLUMN FORMER HOLLOW



COLUMN FORMER HOLLOW STRIPED

## OTHER ADVANTAGES :

For saving cost  
Such method can be used to reduce amount of raw material whilst sustaining the strength of the concrete column.

| Dia (mm)   | Gauge (mm) | Seam Type |
|------------|------------|-----------|
| 102 - 406  | 0.6 - 1.0  | 1,2       |
| 406 - 914  | 0.8 - 1.0  | 1,2       |
| 914 - 1524 | 1.0        | 1,2       |

## SPECIFICATIONS

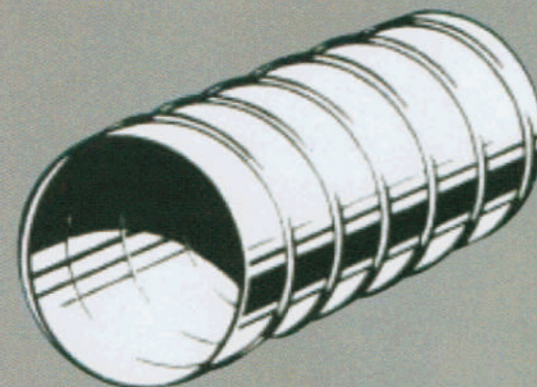
### Corrugation Profiles

Corrugated between seams.

| No. | Size (mm) |
|-----|-----------|
| 1   | Plain     |
| 2   | 15 x 4    |

## APPLICATIONS:

1. Column Formers
2. Pile Liers
3. Well Casings
4. Voids in concrete
5. Culvert Drains



## TYPICAL APPLICATIONS

- Mine and Tunnel Ventilation
- High Pressure Pumping of water or air
- Road Culverts
- Downpipes
- Dust and fume Control
- Concrete formers or voids
- Air Conditioning Ducts
- Builders Rubbish Chutes
- Foundation pile Liners
- Architectural Display

1. Other materials are available, prices on application.
2. Maximum length according to size and gauge.
3. Denotes standard sizes for air conditioning and column forming.

| NOM. DIA (mm) | .6mm 24G | .8mm 22G | 10mm 20G |
|---------------|----------|----------|----------|
| 102           |          |          |          |
| 127           |          |          |          |
| 152           |          |          |          |
| 203           |          |          |          |
| 254           |          |          |          |
| 305           |          |          |          |
| 356           |          |          |          |
| 406           |          |          |          |
| 457           |          |          |          |
| 508           |          |          |          |
| 559           |          |          |          |
| 610           |          |          |          |
| 711           |          |          |          |
| 813           |          |          |          |
| 914           |          |          |          |
| 1016          |          |          |          |
| 1118          |          |          |          |
| 1219          |          |          |          |
| 1321          |          |          |          |
| 1422          |          |          |          |
| 1524          |          |          |          |

| Dia (mm)   | Gauge (mm) | Seam Type |
|------------|------------|-----------|
| 102 - 406  | 0.6 - 1.0  | 1,2       |
| 406 - 914  | 0.8 - 1.0  | 1,2       |
| 914 - 1524 | 1.0        | 1,2       |

## SPECIFICATIONS

### Corrugation Profiles

Corrugated between seams.

| No. | Size (mm) |
|-----|-----------|
| 1   | Plain     |
| 2   | 15 x 4    |

### Joining Methods

SLIP ( M or F ) with duct tape or heat shrink tape.

### Seam Cross Section



## CONNECTOR RANGE

Round fittings and accessories are quality controlled factory produced to dimensions matching all diameters of moradon spiral tubing. Joints can be either spot welded and sealed or fully welded, to suit your requirements.

Joining to straight sections can be made by standard M or F slip or by use of flanges, which we can supply ready fitted to each port.

|                       |                       |                        |                      |
|-----------------------|-----------------------|------------------------|----------------------|
| <p>90°<br/>E-90</p>   | <p>60°<br/>E-60</p>   | <p>45°<br/>E-45</p>    | <p>30°<br/>E-30</p>  |
| <p>TY-CONNECTOR</p>   | <p>T-CONNECTOR</p>    | <p>T-CONNECTOR</p>     | <p>RT-CONNECTOR</p>  |
| <p>REDUCER</p>        | <p>OFFSET REDUCER</p> | <p>SQUARE TO ROUND</p> | <p>RTY-CONNECTOR</p> |
| <p>Y180-CONNECTOR</p> | <p>Y-CONNECTOR</p>    | <p>OFFSET</p>          | <p>CONNECTOR</p>     |

## COLUMN FORMER

Moradon spiral ducting for concrete formwork, is machine made using 4 ply lock seam, running helically around the tube.

It has a ranged of round sizes from 100 mm to 1500 mm diameter. The material we use is coated mild steel (using either paint or zinc) and can be supplied in exact cut lengths-no wastage.

For large projects, we can save transport costs and manufacture the round tubing on your site. Moradon spiral duct can be supplied with or without corrugations.

1. Lightweight and easy to handle, it eliminates costly traditional methods of column forming or pile linings.
2. Minimum supports required.
3. Column forms are easily stripped spirally or with verticle cut grinder.
4. Superior strength for weight because of it's helical lockseam at approximately 120 mm centres.
5. Can be used as permanent or temporary liners

